

NEET Statistics - Quarterly Brief

This note sets out the definitive available statistics on young people Not in Employment, Education or Training (NEET) and young people Not in Education and Training (NET).

The data presented covers England and is on an academic age basis.

The DCSF PSA target to reduce the proportion of 16-18 year olds NEET by 2% points, from 9.6%¹ in 2004 to 7.6% by 2010, is measured using data published annually in the Statistical First Release (SFR) 'Participation in Education, Training and Employment by 16-18 Year Olds in England'. This is the definitive source for NEET and NET figures. However, these data are only available annually, and cannot be disaggregated at local authority level. We can use information from the Labour Force survey (LFS) and Client Caseload Information system (CCIS) maintained by the Connexions Service to monitor NEET at a more detailed level.

Analysis of the Labour Force Survey (LFS) allows less robust in-year estimates to be made of the annual SFR measures.

Connexions Service administrative data (CCIS) allows measurement at local level and more detailed breakdowns of the NEET group to be made. However CCIS uses different definitions and relates only to those young people whose status is known to Connexions so is not directly comparable with LFS or SFR measures.

The 5 data series presented are:

- a. NEET SFR series (latest data end 2007)
- b. NEET quarterly LFS series (latest data Quarter 2 2008)
- c. CCIS data at regional level (latest data Nov 07 – Jan 08 average)
- d. NET SFR series (latest data end 2007)
- e. NET quarterly LFS series (latest data Quarter 2 2008)

Note that other data series exist, such as the Not in Full-time education, not in employment series from the LFS, but they should not be used as NEET series.

Section 1. Trends focuses on the key trends in the NEET and NET data series

Section 2. Segmentation splits down the NEET group into identifiable groups.

Section 3. Methodology and Notes explains the methodology used to derive the different series, and gives guidance on their usage.

Section 4. Tables contains two tables showing numbers and percentages for the key data series on NET and NEET.

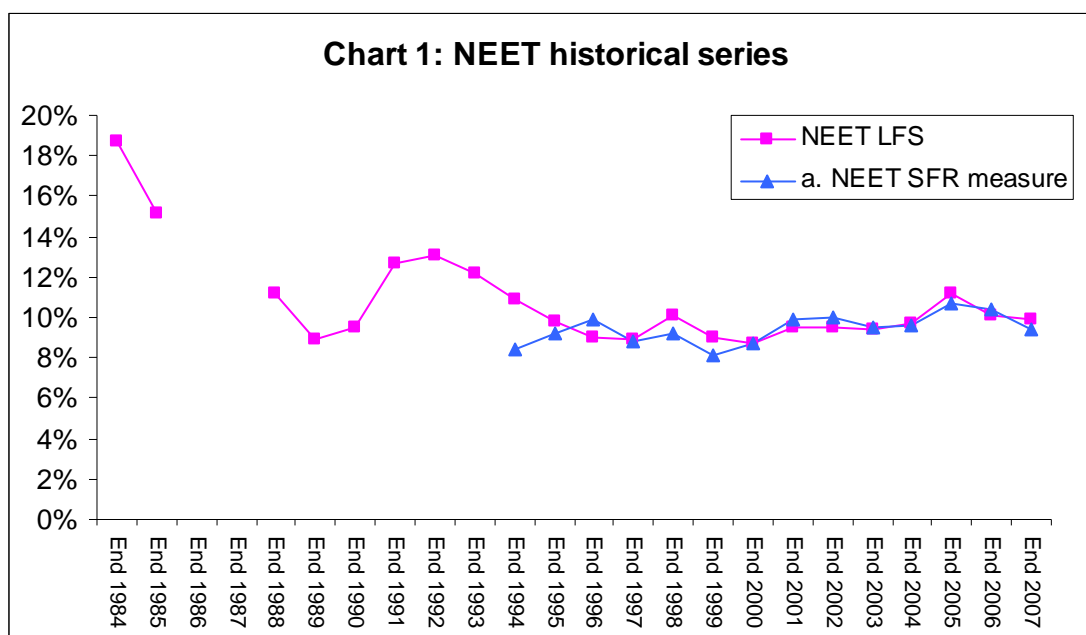
¹ Previously the target baseline was presented as 10% but due to a change in reporting in 2007 NEET figures are now reported to one decimal place. The baseline is 9.6% to one decimal place and thus the 2010 target for a 2 percentage point reduction is 7.6%.

1. Trends

Historical Context

Understanding the historical trends in NEET rates is an important part of placing current performance in perspective. In order to do so, we have to use historical LFS data that is not directly comparable with any other series in this note, and so should be used as context only. Unfortunately, due to data problems, estimates for 1986 and 1987 are unavailable. The chart below also shows the NEET SFR measure for comparison.

NEET rates amongst 16-18 year olds were much higher than their current levels in the 1980s. The peak in 2005 was relatively high by the standards of the last 10 years, but the current level is not far off the long run average.



Source: Statistical First Release (SFR) 'Participation in Education, Training and Employment by 16-18 Year Olds in England' and analysis of Labour Force Survey

Note on LFS estimates: Annual data sets are used for 1984 to 1991.

Quarter 4 data is used from 1992 onwards.

Between 1992 and 1994 the data does not exclude individuals answering yes to the *qulnow* variable, and between 1995 and 1999 individuals sampled in December answering yes to the *qulnow* variable are excluded. This may mean that between 1992 and 1999 the proportion NEET is very slightly over-estimated.

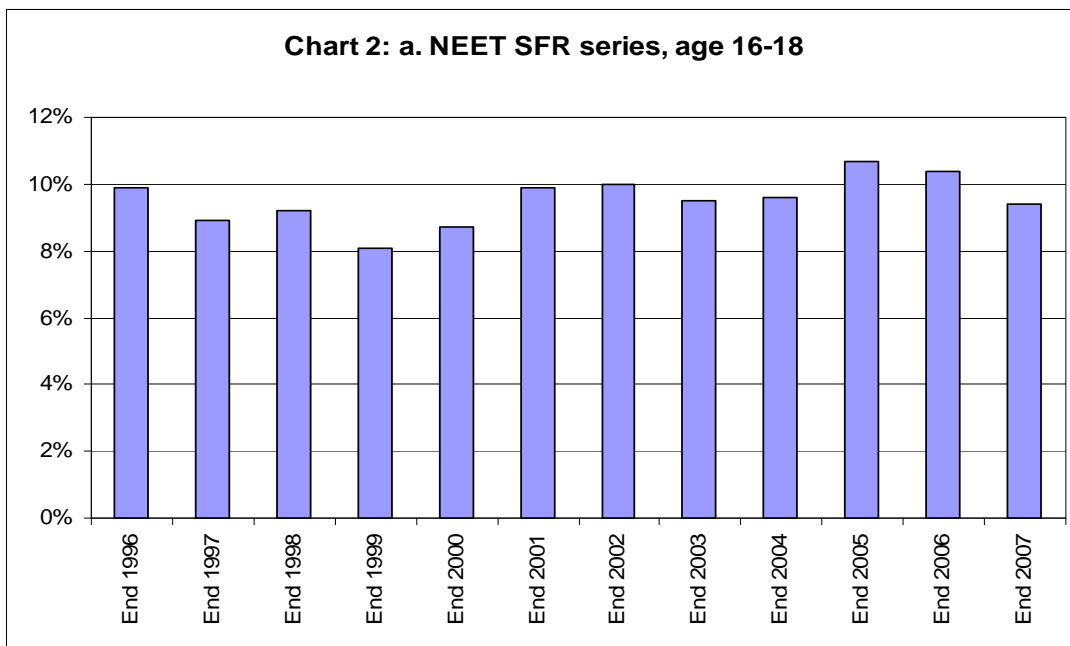
a. NEET SFR series (last updated – June 2008)

DCSF has a PSA target to reduce the proportion of 16-18 year olds NEET by 2% points from 9.6%² in 2004 to 7.6% by 2010. The Department's Statistical First Release (SFR) 'Participation in Education, Training and Employment by 16-18 Year Olds in England' is used to measure progress against the PSA target and is the primary source of data on 16-18 year olds NEET.

Despite participation in education and training amongst 16-18 year olds rising consistently since 2003, causing the proportion of the NET group to fall, the proportion of the cohort who were NEET rose in the period 2003-2005, due to a rise in the proportion of the NET group who are NEET. The latest end of year data shows a welcome fall in the

² Previously the target baseline was presented as 10% but due to a change in reporting in 2007 NEET figures are now reported to one decimal place. The baseline is 9.6% to one decimal place and thus the 2010 target for a 2 percentage point reduction is 7.6%.

NEET rate to 9.4%, although we still need to see a significant reduction in NEET to meet the 2010 target. This fall reflects a decrease in the NEET rates at all ages.

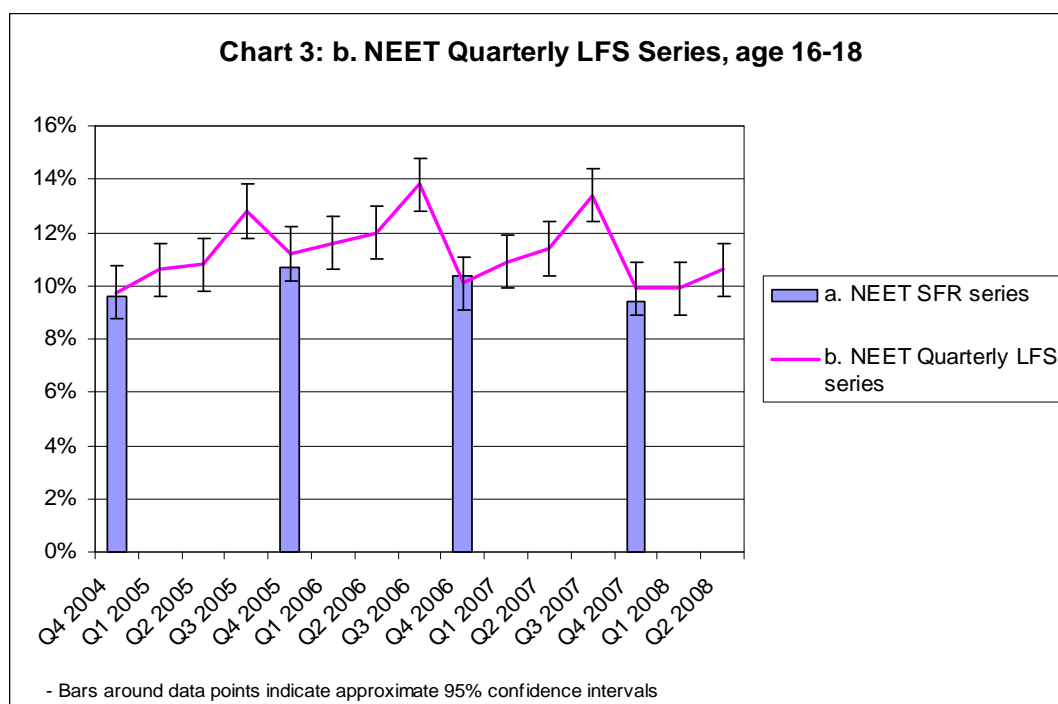


Source Statistical First Release (SFR) 'Participation in Education, Training and Employment by 16-18 Year Olds in England'

b. NEET quarterly LFS series (last updated August 2008)

We can monitor trends in NEET rates between the publications of the SFR series using quarterly LFS data.

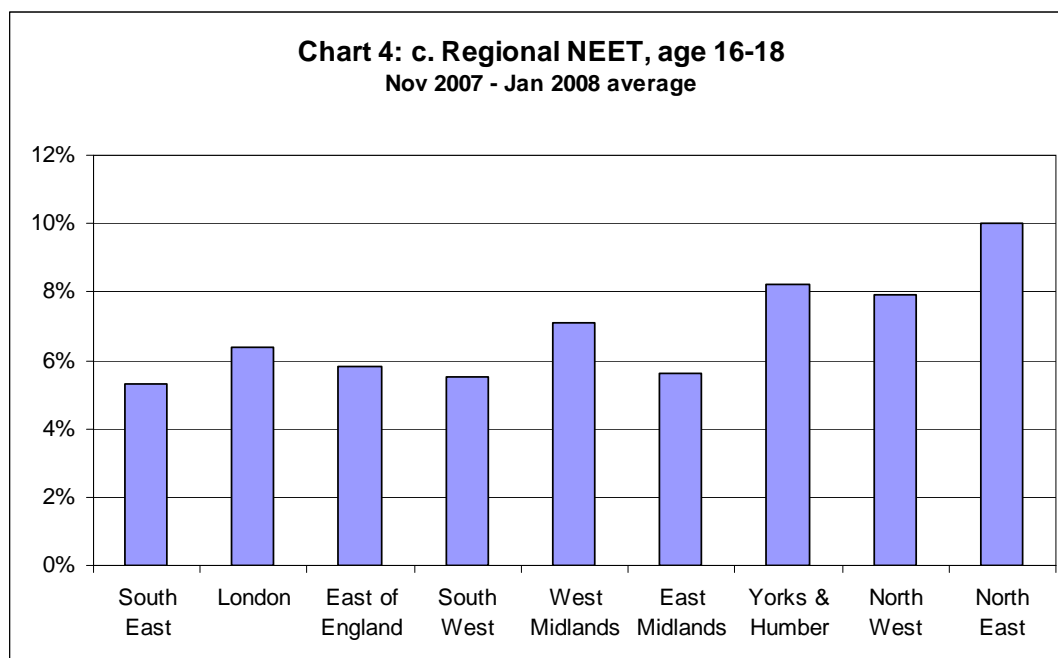
The trend data for 16-18 year olds shows the traditional seasonal patterns of a rise in summer and autumn, and a fall in winter, reflecting the academic year. Over the last 6 quarters, the LFS measure has been lower than the respective quarter in the previous year. In the latest quarter (Quarter 2 2008) the rate is 0.9 percentage points lower than the same quarter last year.



Source: Quarterly Labour Force Survey

c. Regional NEET (last updated January 2008)

The regional picture on NEET is taken from Connexions service administration data (CCIS), so is not directly comparable with other series presented here. Connexions data shows a lower % NEET than either the SFR or LFS, as there are a number of differences in the definitions used. For example, young people taking a formal gap year or in custody are not counted as NEET in the Connexions Service data.



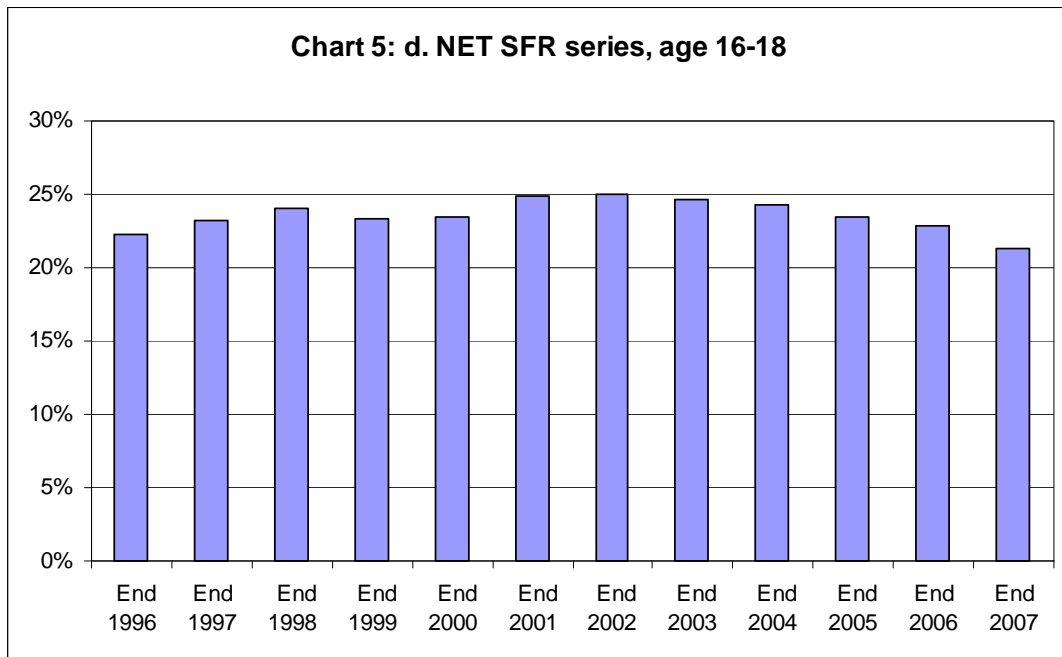
Source: CCIS data

Note: Connexions data are available at local authority level, and are published annually on the DCSF 14-19 website: [Link Here](#)

d. NET SFR series (last updated June 2008)

When looking at NEET data, it is also important to contextualise it with data on the proportion of young people NET. This data is also taken from the DCSF Statistical First Release (SFR) 'Participation in Education, Training and Employment by 16-18 Year Olds in England'.

The latest data shows the largest fall in the 16-18 year old NET rate since 1993. This follows a continued fall in the proportion of 16-18 year olds NET since 2003. Even as the NEET rate was rising between 2003 and 2005 an increasing proportion of young people were participating in post-compulsory education and training. This means the rise in NEET was caused by a reduction in employment amongst the NET group. This increasing trend in NEET rates reversed for 16 and 17 year olds between 2005 and 2006, although the rate for 18 year olds continued to rise. In the latest data, the NEET rate for 16 and 17 year olds continued to fall, and the NEET rate for 18 year olds also fell – the first fall in the 18 year old rate since 2004.

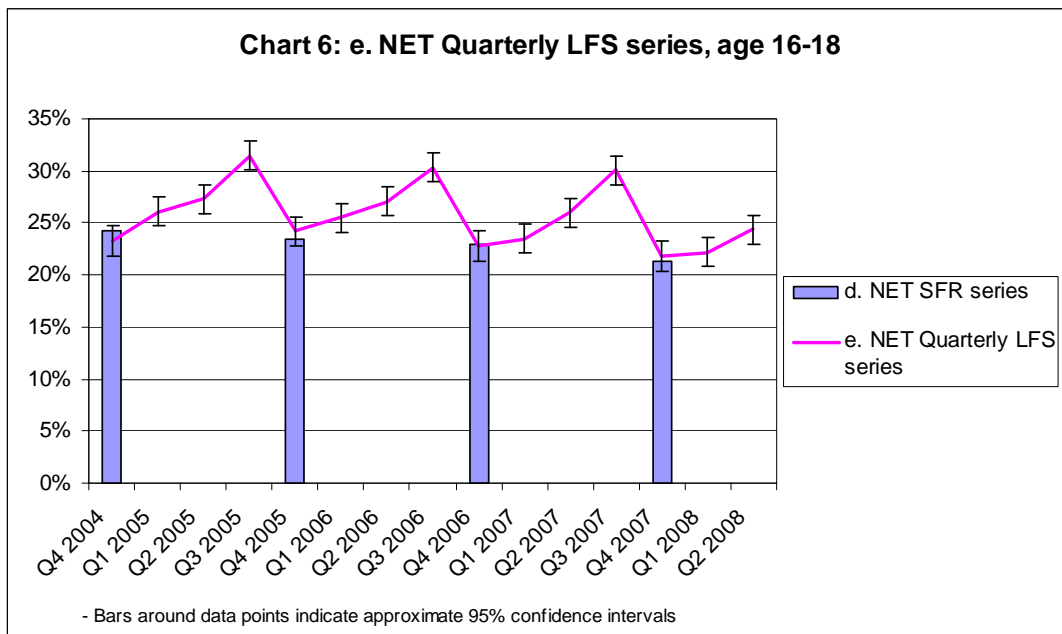


Source Statistical First Release (SFR) 'Participation in Education, Training and Employment by 16-18 Year Olds in England'

e. NET quarterly LFS series (last updated August 2008)

As with the NEET data, we can look at the in-year NET trend data using the quarterly LFS.

We can see that there is a seasonal pattern to the NET figures, as in the NEET series. In the last 10 quarters the NET rate has been lower than in the respective quarter in the previous year. In the latest quarter (Quarter 2 2008) the rate is 1.6 percentage points lower than the same quarter last year.



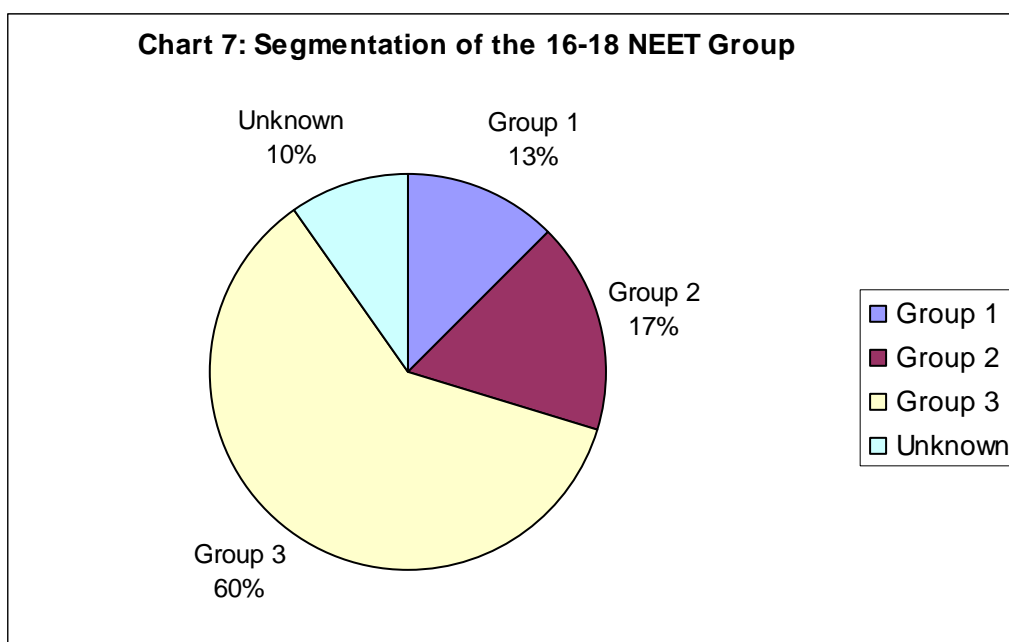
Source: Quarterly Labour Force Survey

2. Segmentation

Using the Connexions Case Information System (CCIS) data, we can classify the NEET group into one of 4 types.

- **Group 1:** young people who are doing some activity which is not formally counted as education, employment or training. This will include gap year students and those undertaking voluntary work. It will also include those in custody.
- **Group 2:** young people who have an identifiable barrier to participation, as they have a child or are experiencing serious illness or disability. Some of these individuals may be perfectly able to participate now, but others may require specific help to do so.
- **Group 3:** This group is those young people whose activity is known but are not in a specific group outlined above.
- **'Unknowns':** Those for whom we do not know their current activity.

By segmenting the NEET group into these groups using the rich CCIS data we can build up a picture of what the policy target group looks like, proportions shown in Chart 7. If these percentages were applied to the total number of 16-18 year olds NEET from the SFR data, there would be 25,000 in group 1, 34,000 in group 2, 109,000 in group 3 and 21,000 unknowns.



Source: Internal DCSF analysis based on CCIS, YCS, and UCAS data

3. Methodology and Notes

a. NEET SFR series

<i>Description</i>	This data is the definitive measure for NEET rates in England. It is used to measure of the PSA target.
<i>Uses</i>	This series should be used as the National Time series for 16-18 year olds NEET in England. It is used to measure progress against the PSA target to reduce the proportion of young people NEET by 2 percentage points between 2004 and 2010.
<i>Geographical Coverage</i>	England
<i>Age coverage</i>	Academic age 16 to 18
<i>Published source</i>	DCSF Statistical First Release (SFR) 'Participation in Education, Training and Employment by 16-18 Year Olds in England'
<i>Primary sources</i>	The Schools' Census Pupil Level Annual Schools' Census The Individualised Learner Record (ILR) Higher Education Statistics Agency (HESA). Higher Education Students Early Statistics (HESES) Labour Force Survey Mid-year estimates and projections of population from the Office for National Statistics (ONS) and the Government Actuary's Department (GAD).
<i>Last period covered</i>	End 2007
<i>Last published</i>	June 2008
<i>Next published</i>	June 2009

b. NEET quarterly LFS series

<i>Description</i>	This series is a quarterly estimate of NEET amongst young people from the LFS. It cannot be directly used to measure progress against the PSA target.
<i>Uses</i>	This series provides more timely data on the recent trends in NEET since the last SFR. However, it is not directly comparable with the SFR series, and cannot be used to measure against the target. Trends should be assessed by comparing the current quarter with the same quarter in the previous year to account for seasonal effects. Quarter on quarter changes should not be quoted.
<i>Geographical Coverage</i>	England
<i>Age coverage</i>	Academic age 16 to 24
<i>Published source</i>	Quarterly Labour Force Survey
<i>Primary sources</i>	Quarterly Labour Force Survey
<i>Last Period Covered</i>	Q2 2008
<i>Last published</i>	August 2008
<i>Next published</i>	November 2008

c. Regional NEET

<i>Description</i>	This series is a 3 month average snapshot estimate of the regional NEET rate taken from the CCIS connexions management information system. It is not directly comparable with the LFS or SFR series, and cannot be used to measure progress against the PSA target. Because of the discrepancy in numbers between this and other measures, only percentages are reported. Unlike in the other series, young people taking a formal gap year or in custody are not counted as NEET.
<i>Uses</i>	This series allow us to look at the regional data used by connexions partnerships to set local activity and targets on NEET. It helps us understand the data that local connexions partnerships base their decisions on.
<i>Geographical Coverage</i>	England
<i>Age coverage</i>	Academic age 16 to 18
<i>Published source</i>	Unpublished CCIS data
<i>Primary sources</i>	CCIS
<i>Last Period Covered</i>	November 2007 – January 2008 average.
<i>Last published</i>	N/A
<i>Next published</i>	N/A

d. NET SFR series

<i>Description</i>	This data is the definitive measure for NET rates in England.
<i>Uses</i>	This series should be used as a national time series for 16-18 year olds NET in England. It should also be used as context for any NEET data.
<i>Geographical Coverage</i>	England
<i>Age coverage</i>	Academic age 16 to 18
<i>Published source</i>	DCSF Statistical First Release (SFR) 'Participation in Education, Training and Employment by 16-18 Year Olds in England'
<i>Primary sources</i>	The Schools' Census Pupil Level Annual Schools' Census The Individualised Learner Record (ILR) HE Higher Education Statistics Agency (HESA). Higher Education Students Early Statistics (HESES) Labour Force Survey Mid-year estimates and projections of population from the Office for National Statistics (ONS) and the Government Actuary's Department (GAD).
<i>Last Period Covered</i>	End 2007
<i>Last published</i>	June 2008
<i>Next published</i>	June 2009

e. NET quarterly LFS series

<i>Description</i>	This series is a quarterly estimate of NET amongst young people from the LFS.
<i>Uses</i>	This series provides more timely data on the recent trends in NET since the last SFR. It should also be used as context for any NEET data. Trends should be assessed by comparing the current quarter with the same quarter in the previous year to account for seasonal effects. Quarter on quarter changes should not be quoted.
<i>Geographical Coverage</i>	England
<i>Age coverage</i>	Academic age 16 to 24
<i>Published source</i>	Quarterly Labour Force Survey
<i>Primary sources</i>	Quarterly Labour Force Survey
<i>Last Period Covered</i>	Q2 2008
<i>Last published</i>	August 2008
<i>Next published</i>	November 2008

Table 1: NEET and NET							Numbers	
a. NEET SFR series		16 year olds	17 year olds	18 year olds	16-17 year olds	16-18 year olds	16-24 year olds	18-24 year olds
End 1996		39,800	60,800	73,000	100,600	173,600		
End 1997		35,700	49,400	74,900	85,100	160,000		
End 1998		39,700	51,600	75,400	91,300	166,600		
End 1999		40,600	42,500	62,400	83,100	145,500		
End 2000		40,700	44,200	71,300	84,800	156,100		
End 2001		48,500	58,900	75,000	107,400	182,400		
End 2002		49,100	57,800	81,500	106,900	188,400		
End 2003		49,600	49,200	84,800	98,800	183,500		
End 2004		48,800	60,500	80,500	109,300	189,800		
End 2005		50,600	70,200	92,900	120,800	213,700		
End 2006		44,600	65,000	100,100	109,600	209,700		
End 2007		35,900	61,100	92,500	97,000	189,500		
Source:		<i>LFS and Admin Data</i>		Period: <i>End 1996 to End 2007</i>				
b. NEET Quarterly LFS series		16 year olds	17 year olds	18 year olds	16-17 year olds	16-18 year olds	16-24 year olds	18-24 year olds
Q1 2005		61,000	64,000	79,000	125,000	204,000	743,000	618,000
Q2 2005		60,000	64,000	81,000	124,000	206,000	771,000	646,000
Q3 2005		70,000	91,000	87,000	161,000	248,000	877,000	716,000
Q4 2005		63,000	62,000	91,000	126,000	217,000	837,000	712,000
Q1 2006		55,000	74,000	98,000	129,000	227,000	806,000	677,000
Q2 2006		56,000	73,000	105,000	128,000	233,000	851,000	723,000
Q3 2006		71,000	95,000	103,000	166,000	268,000	970,000	804,000
Q4 2006		56,000	53,000	88,000	109,000	197,000	808,000	698,000
Q1 2007		55,000	62,000	95,000	117,000	212,000	828,000	711,000
Q2 2007		56,000	67,000	99,000	123,000	222,000	833,000	710,000
Q3 2007		60,000	99,000	103,000	158,000	261,000	909,000	751,000
Q4 2007		45,000	59,000	88,000	104,000	192,000	782,000	679,000
Q1 2008		41,000	62,000	89,000	104,000	193,000	810,000	707,000
Q2 2008		45,000	65,000	99,000	110,000	209,000	840,000	730,000
Source:		<i>Labour Force Survey</i>		Period: <i>Q1 2005 to Q2 2008 time series</i>				
c. Regional NEET		16 year olds	17 year olds	18 year olds	16-17 year olds	16-18 year olds	16-24 year olds	18-24 year olds
South East								
London								
East of England								
South West								
West Midlands								
East Midlands								
Yorks & Humber								
North West								
North East								
Source:		<i>CCIS</i>		Period: <i>Nov 2007 - Jan 2008 average</i>				
d. NET SFR series		16 year olds	17 year olds	18 year olds	16-17 year olds	16-18 year olds	16-24 year olds	18-24 year olds
End 1996		76,600	111,700	200,800	188,300	389,100		
End 1997		79,900	118,400	220,900	198,300	419,200		
End 1998		82,700	117,900	231,700	200,500	432,300		
End 1999		77,500	111,600	226,200	189,200	415,400		
End 2000		82,700	116,300	222,400	198,900	421,300		
End 2001		90,500	132,600	236,100	223,100	459,200		
End 2002		85,300	139,900	247,700	225,200	472,900		
End 2003		85,000	132,700	260,400	217,700	478,100		
End 2004		84,400	136,400	258,400	220,800	479,200		
End 2005		76,200	134,700	258,300	210,900	469,200		
End 2006		71,200	126,700	263,700	197,900	461,600		
End 2007		61,800	118,600	249,700	180,400	430,100		
Source:		<i>LFS and Admin Data</i>		Period: <i>End 1996 to End 2007</i>				
e. NET Quarterly LFS series		16 year olds	17 year olds	18 year olds	16-17 year olds	16-18 year olds	16-24 year olds	18-24 year olds
Q1 2005		106,000	143,000	253,000	249,000	502,000	2,689,000	2,440,000
Q2 2005		111,000	154,000	258,000	265,000	522,000	2,775,000	2,511,000
Q3 2005		119,000	212,000	279,000	331,000	610,000	2,992,000	2,661,000
Q4 2005		85,000	123,000	262,000	208,000	470,000	2,698,000	2,490,000
Q1 2006		83,000	142,000	272,000	224,000	496,000	2,715,000	2,490,000
Q2 2006		93,000	155,000	279,000	248,000	527,000	2,870,000	2,622,000
Q3 2006		104,000	214,000	271,000	318,000	588,000	3,137,000	2,820,000
Q4 2006		78,000	112,000	256,000	191,000	447,000	2,754,000	2,563,000
Q1 2007		87,000	121,000	250,000	208,000	458,000	2,783,000	2,575,000
Q2 2007		100,000	135,000	270,000	235,000	505,000	2,889,000	2,654,000
Q3 2007		96,000	214,000	279,000	310,000	589,000	3,113,000	2,803,000
Q4 2007		70,000	117,000	237,000	187,000	424,000	2,799,000	2,612,000
Q1 2008		70,000	121,000	241,000	192,000	432,000	2,799,000	2,608,000
Q2 2008		77,000	141,000	262,000	218,000	480,000	2,925,000	2,707,000
Source:		<i>Labour Force Survey</i>		Period: <i>Q1 2005 to Q2 2008 time series</i>				

Table 2: NEET and NET
Percentage

a. NEET SFR series		16 year olds	17 year olds	18 year olds	16-17 year olds	16-18 year olds	16-24 year olds	18-24 year olds
End 1996		6.5%	10.3%	13.5%	8.3%	9.9%		
End 1997		5.9%	8.1%	12.7%	7.0%	8.9%		
End 1998		6.7%	8.5%	12.4%	7.6%	9.2%		
End 1999		6.8%	7.2%	10.4%	7.0%	8.1%		
End 2000		6.7%	7.4%	12.2%	7.0%	8.7%		
End 2001		7.7%	9.6%	12.5%	8.6%	9.9%		
End 2002		7.8%	9.0%	13.1%	8.4%	10.0%		
End 2003		7.7%	7.7%	13.0%	7.7%	9.5%		
End 2004		7.3%	9.2%	12.4%	8.3%	9.6%		
End 2005		7.7%	10.4%	14.0%	9.1%	10.7%		
End 2006		6.7%	9.8%	14.7%	8.2%	10.4%		
End 2007		5.4%	9.1%	13.7%	7.2%	9.4%		
Source: LFS and Admin Data		Period: End 1996 to End 2007						
b. NEET Quarterly LFS series		16 year olds	17 year olds	18 year olds	16-17 year olds	16-18 year olds	16-24 year olds	18-24 year olds
Q1 2005		9.5%	9.7%	12.8%	9.6%	10.6%	13.1%	14.2%
Q2 2005		9.2%	9.8%	13.5%	9.5%	10.8%	13.5%	14.7%
Q3 2005		10.6%	14.2%	13.6%	12.4%	12.8%	15.2%	16.1%
Q4 2005		10.1%	9.6%	13.8%	9.8%	11.2%	14.6%	16.0%
Q1 2006		8.9%	10.9%	15.0%	10.0%	11.6%	14.1%	15.2%
Q2 2006		9.0%	10.8%	16.0%	9.9%	12.0%	14.8%	16.1%
Q3 2006		10.8%	14.4%	16.3%	12.6%	13.8%	16.6%	17.8%
Q4 2006		8.5%	8.4%	13.3%	8.4%	10.1%	13.8%	15.3%
Q1 2007		8.2%	9.8%	14.6%	9.0%	10.9%	14.1%	15.6%
Q2 2007		8.7%	10.5%	14.9%	9.6%	11.4%	14.2%	15.5%
Q3 2007		9.2%	14.6%	16.3%	12.0%	13.4%	15.4%	16.4%
Q4 2007		6.9%	9.0%	13.7%	7.9%	9.9%	13.1%	14.6%
Q1 2008		6.3%	9.6%	13.9%	8.0%	9.9%	13.6%	15.2%
Q2 2008		7.0%	9.7%	15.1%	8.4%	10.6%	14.0%	15.5%
Source: Labour Force Survey		Period: Q1 2005 to Q2 2008 time series						
c. Regional NEET		16 year olds	17 year olds	18 year olds	16-17 year olds	16-18 year olds	16-24 year olds	18-24 year olds
South East		4.6%	5.4%	5.6%	5.1%	5.3%		
London		5.3%	6.5%	7.1%	6.0%	6.4%		
East of England		4.8%	5.8%	6.4%	5.4%	5.8%		
South West		4.6%	5.6%	5.9%	5.2%	5.5%		
West Midlands		6.1%	7.3%	7.6%	6.8%	7.1%		
East Midlands		4.9%	5.6%	6.0%	5.3%	5.6%		
Yorks & Humber		7.0%	8.5%	8.7%	7.9%	8.2%		
North West		6.5%	8.0%	8.8%	7.4%	7.9%		
North East		7.3%	9.8%	12.2%	8.8%	10.0%		
Source: CCIS		Period: Nov 2007 - Jan 2008 average						
d. NET SFR series		16 year olds	17 year olds	18 year olds	16-17 year olds	16-18 year olds	16-24 year olds	18-24 year olds
End 1996		12.5%	18.8%	37.1%	15.6%	22.3%		
End 1997		13.2%	19.4%	37.5%	16.3%	23.2%		
End 1998		13.9%	19.5%	38.2%	16.7%	24.0%		
End 1999		12.9%	18.9%	37.9%	15.9%	23.3%		
End 2000		13.6%	19.4%	38.0%	16.5%	23.5%		
End 2001		14.3%	21.6%	39.2%	17.9%	24.9%		
End 2002		13.5%	21.9%	39.8%	17.7%	25.0%		
End 2003		13.1%	20.8%	40.0%	16.9%	24.7%		
End 2004		12.7%	20.8%	39.8%	16.7%	24.3%		
End 2005		11.6%	20.0%	38.9%	15.9%	23.5%		
End 2006		10.7%	19.1%	38.7%	14.9%	22.9%		
End 2007		9.2%	17.6%	37.0%	13.4%	21.3%		
Source: LFS and Admin Data		Period: End 1996 to End 2007						
e. NET Quarterly LFS series		16 year olds	17 year olds	18 year olds	16-17 year olds	16-18 year olds	16-24 year olds	18-24 year olds
Q1 2005		16.4%	21.7%	40.9%	19.1%	26.1%	47.6%	56.1%
Q2 2005		16.9%	23.6%	42.8%	20.2%	27.3%	48.7%	57.1%
Q3 2005		18.1%	33.0%	43.9%	25.4%	31.5%	52.0%	59.8%
Q4 2005		13.6%	18.9%	39.5%	16.3%	24.2%	47.0%	55.9%
Q1 2006		13.5%	20.9%	41.7%	17.4%	25.5%	47.3%	56.1%
Q2 2006		15.0%	23.1%	42.6%	19.2%	27.1%	49.7%	58.5%
Q3 2006		15.9%	32.4%	43.0%	24.2%	30.3%	53.8%	62.4%
Q4 2006		11.9%	17.6%	38.7%	14.7%	22.8%	47.1%	56.3%
Q1 2007		13.1%	19.1%	38.6%	16.0%	23.5%	47.5%	56.4%
Q2 2007		15.5%	21.3%	40.8%	18.4%	26.0%	49.3%	58.0%
Q3 2007		14.8%	31.7%	43.9%	23.5%	30.1%	52.7%	61.1%
Q4 2007		10.8%	17.9%	36.7%	14.3%	21.8%	47.0%	56.2%
Q1 2008		10.7%	18.7%	37.6%	14.7%	22.2%	47.0%	56.1%
Q2 2008		12.0%	21.0%	40.1%	16.6%	24.4%	48.6%	57.6%
Source: Labour Force Survey		Period: Q1 2005 to Q2 2008 time series						